

Quality Control Discrepancy Input Module

This new feature is still being enhanced. Some of the fields and functionalities may be changed or replaced in the future. This write-up is for the latest MIETrak 10.4.

DISCREPANCY/CAUSE TAB

The screenshot shows the 'Quality Control RMA Discrepancy Input' window. It is divided into three main sections: 'Discrepancy / Cause', 'Disposition / Explanation / Cost', and 'Corrective Action / Preventative Action'. The 'Discrepancy / Cause' section contains fields for RMA Status (Open), Job # (0000001), Customer (DAWES AND CRANE, INC.), Part # (420-40263-08-SPI), and Description (CHASSIS COVER). Below these are text areas for 'Discrepancy / Explanation' (containing 'Article #1 incomplete.') and 'Cause' (containing 'Cause #1: paint' and 'Cause #2: bar'). The 'Disposition / Explanation / Cost' section includes 'Inspected By' (ROBBINS JERRY) and 'Date' (08/14/09). The 'Corrective Action / Preventative Action' section includes fields for Router (0000019), Item # (10), Rev (C), W.O. # (00000310), RMA No. (00000004), Qty Received (10), Received Date (//), Qty Returned (0), Reject Description (Broken handle), Workcenter (NON PRODUCTIVE), and Resp. Party (PRATT BRIAN). At the bottom, there are checkboxes for Production, Purchasing, Shipping, Sales, Accounting, and Administration, along with a printer icon and an OK button.

Start by entering a Quantity Received in Qty Received field. This will enable all fields and drop down lists on this screen. Inspected By field can be entered by either scrolling down the list or by clicking on the single eyeball next to it to enter current logged in user name. Reject Description can be added in Maintenance > Rejection Reasons screen.

Rejection Reasons

Rejection Code : A10

Description : Rejection Code A10

Checkboxes at the bottom of the screen (Production, Purchasing, Shipping, etc.) do not have any functionalities at this time. They're only for references and you're able to print those out on the report.

DISPOSITION/EXPLANATION/COST TAB

Quality Control RMA Discrepancy Input

Discrepancy / Cause Disposition / Explanation / Cost Corrective Action / Preventative Action

RMA Status: Open Job #: 00000001 Customer: DAWES AND CRANE, INC. Router: 0000019 Item #: 10

Part #: 420-40263-08-SPI Rev: C W.O. #: 00000310 Work Orders

Description: CHASSIS COVER RMA No.: 00000004

DMR Completed Qty Rework: 15 Qty Received: 10

Corrective Action Required Qty Scrap: 1 Received Date: / /

Disposition: Disposition 1 Qty Returned: 0

Explanation

Action	Verified Date
<input type="checkbox"/> Material Received in MRB Area	01/15/08
<input type="checkbox"/> WIP Checked for Defect	08/14/09
<input type="checkbox"/> On Hand Inventory Checked for Defect	08/14/09
<input type="checkbox"/> MRB Meeting Held	/ /

Rework Costs	
Labor :	\$5.700
Material :	\$9.000
Misc :	\$20.000
Scrap :	\$7.400
Total :	\$42.10

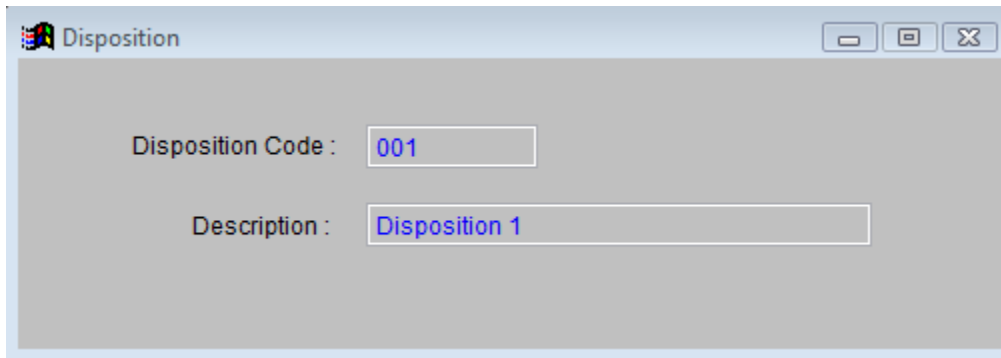
Approved By: STACEY ED Date: 08/14/09

Production Purchasing Shipping Sales Accounting Administration

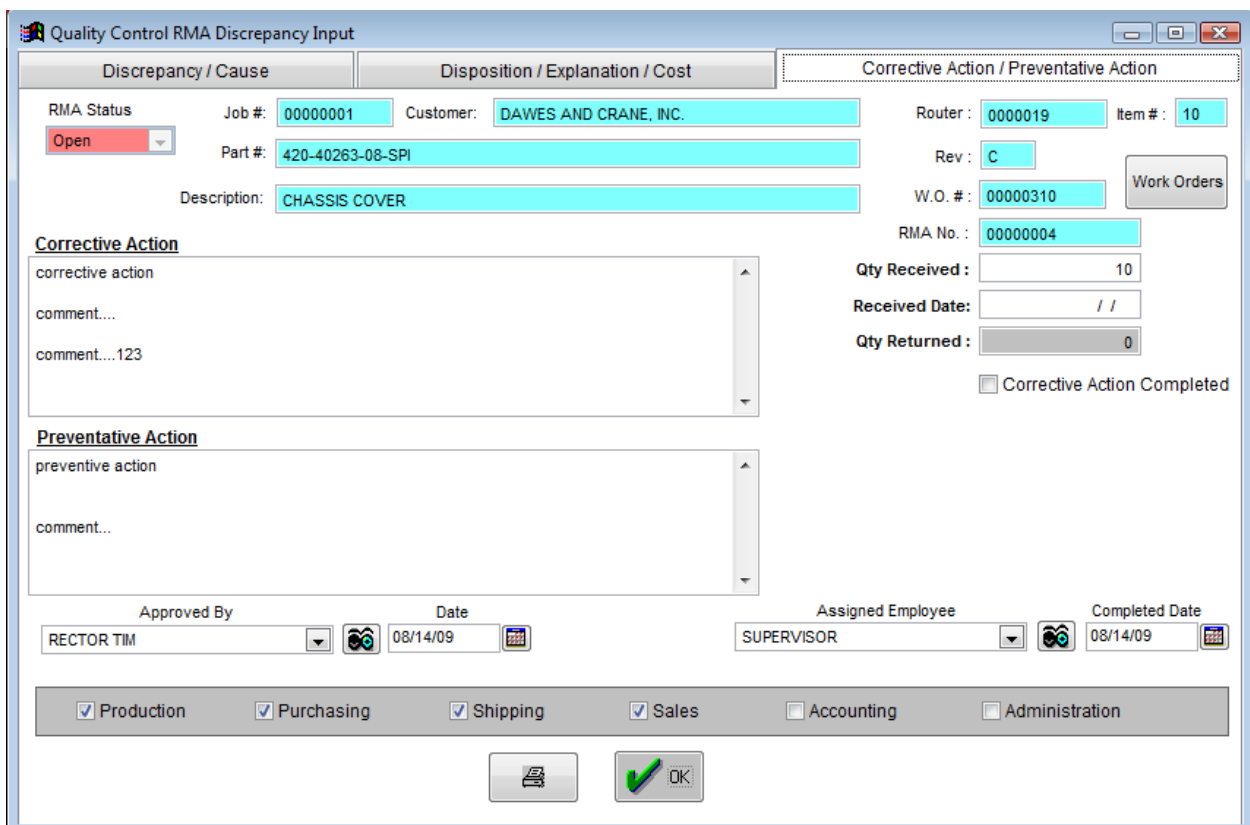
Print OK

Once you have entered your information on this screen, click on DMR Completed checkbox to prevent any further changes to be made. If there are any corrective actions required, click on Corrective Action

Required checkbox to activate the last tab. You can click on the Work Orders button to directly access the work order module for the RMA you're on. Disposition can be added in Maintenance > Disposition.



CORRECTIVE ACTION/PREVENTATIVE ACTION TAB



Once you clicked on Corrective Action Completed checkbox, you will no longer be able to make any changes to the screen. The printer button on the screen takes you to the same set of reports on the RMA's tab in Sales Order module.