








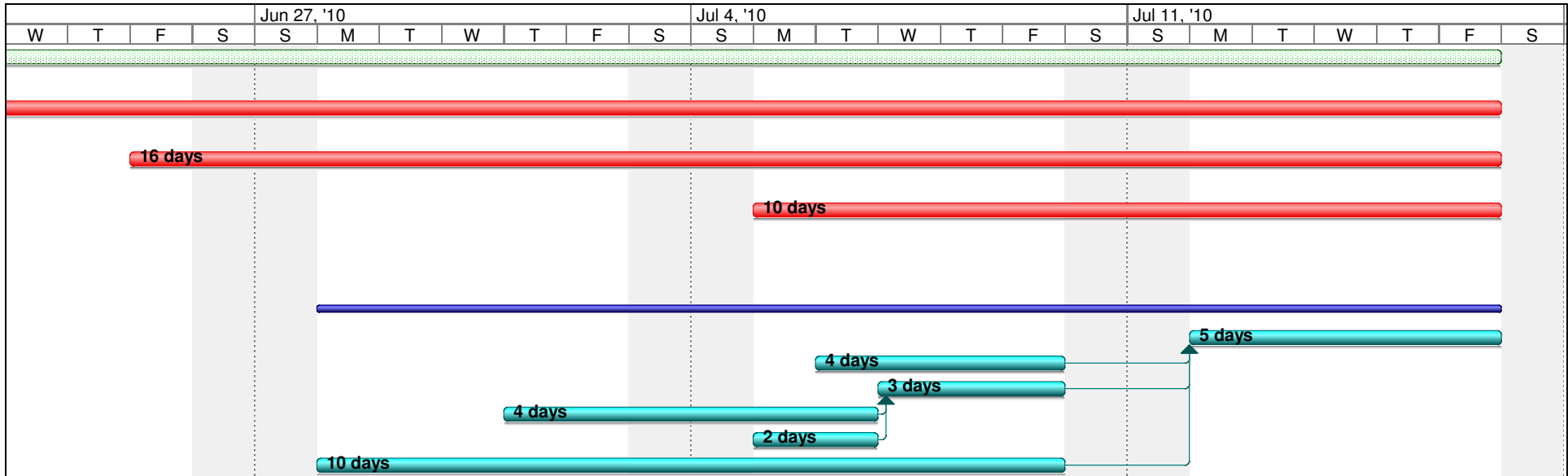


ID	Task Name	Duration	Start	Finish	Predecessors	Jun 13, '10							Jun 20, '10		
						S	M	T	W	T	F	S	S	M	T
1	Projected Days	25 days	Mon 6/14/10	Fri 7/16/10		<b>25 days</b>									
2															
3	Expected Release Days (Days prior	23 days	Wed 6/16/10	Fri 7/16/10		<b>23 days</b>									
4															
5	On Dock Days Material	16 days	Fri 6/25/10	Fri 7/16/10											
6															
7	On Dock Days Hardware	10 days	Mon 7/5/10	Fri 7/16/10											
8															
9															
10															
11	Product Days - Total based on long	15 days	Mon 6/28/10	Fri 7/16/10											
12	Assembly A - zero level	5 days	Mon 7/12/10	Fri 7/16/10	13,14,17										
13	Part A-1	4 days	Tue 7/6/10	Fri 7/9/10											
14	Part A-2	3 days	Wed 7/7/10	Fri 7/9/10	15,16										
15	Part A-2-1	4 days	Thu 7/1/10	Tue 7/6/10											
16	Part A-2-2	2 days	Mon 7/5/10	Tue 7/6/10											
17	Part A-3	10 days	Mon 6/28/10	Fri 7/9/10											

Project: Days Prior to Due Date Date: Mon 6/14/10	Task		Milestone		External Tasks	
	Split		Summary		External Milestone	
	Progress		Project Summary		Deadline	



Project: Days Prior to Due Date Date: Mon 6/14/10	Task		Milestone		External Tasks	
	Split		Summary		External Milestone	
	Progress		Project Summary		Deadline	